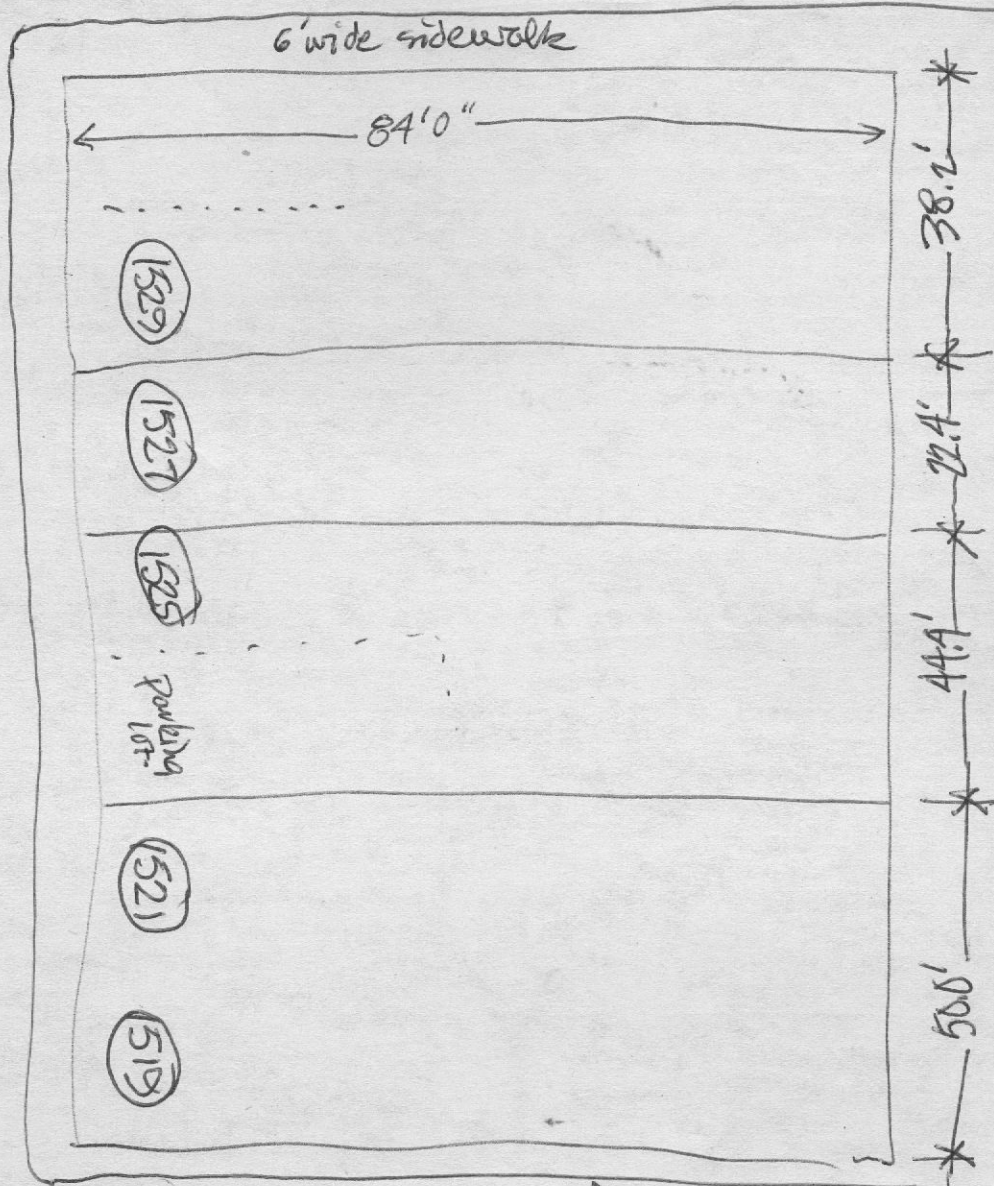
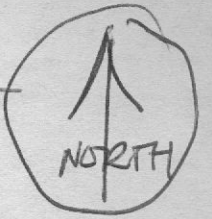


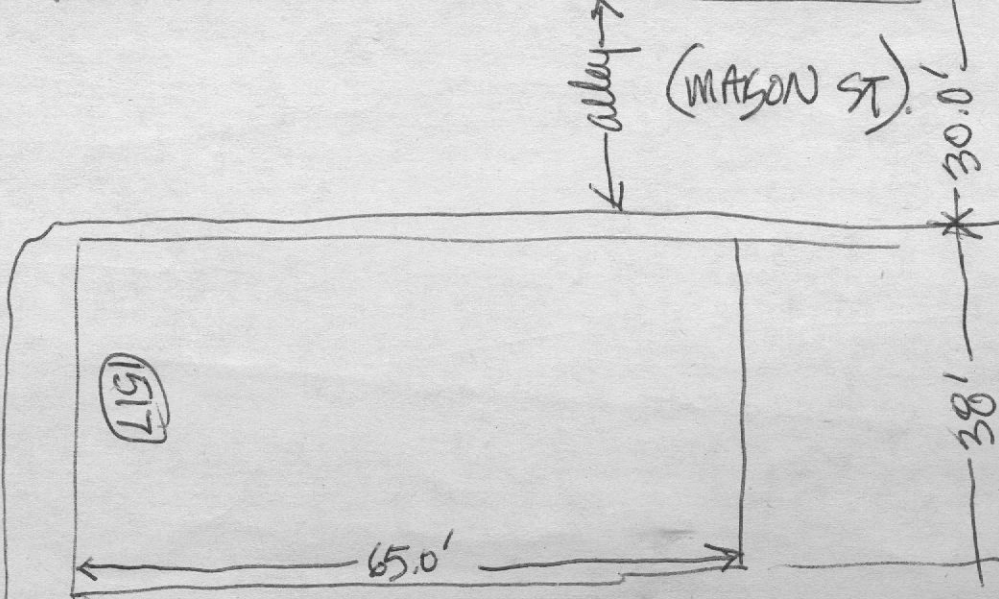
CORMORANT ST.



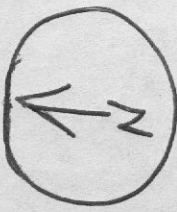
AMELIA ST.

← alley →

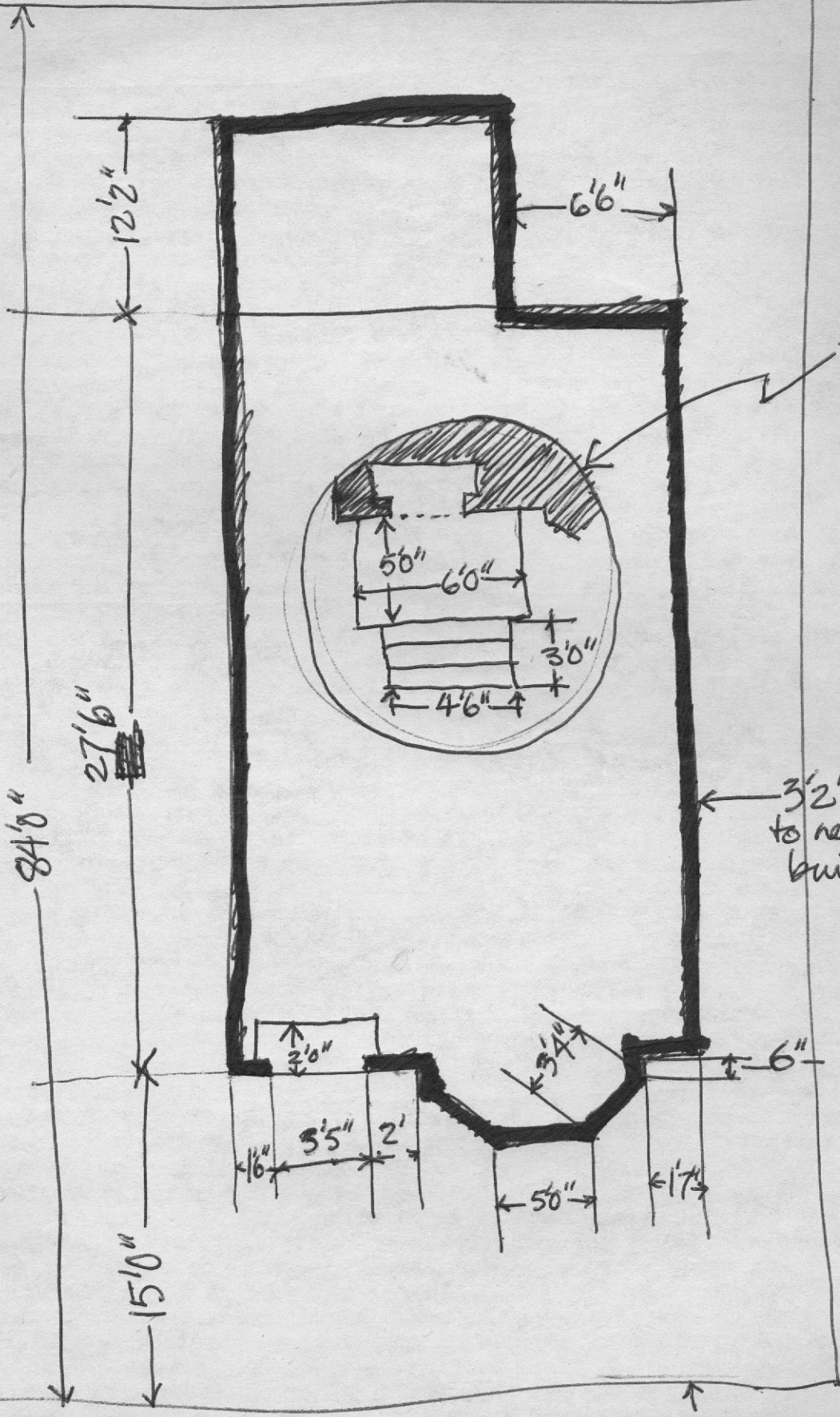
(MASON ST.)



SITE PLAN.



6' Sidewalk



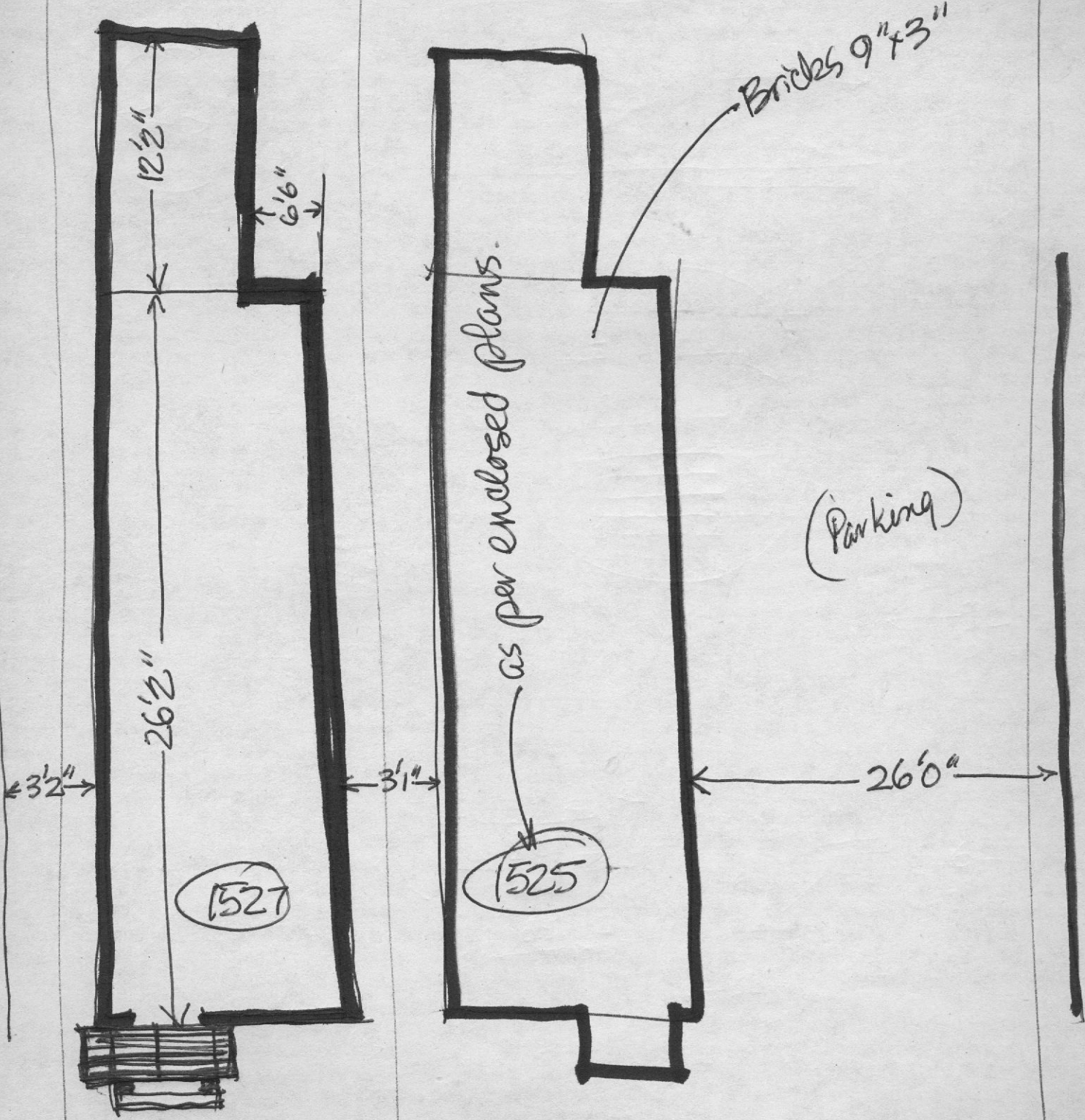
FRONT STEPS

3 1/2" to next building

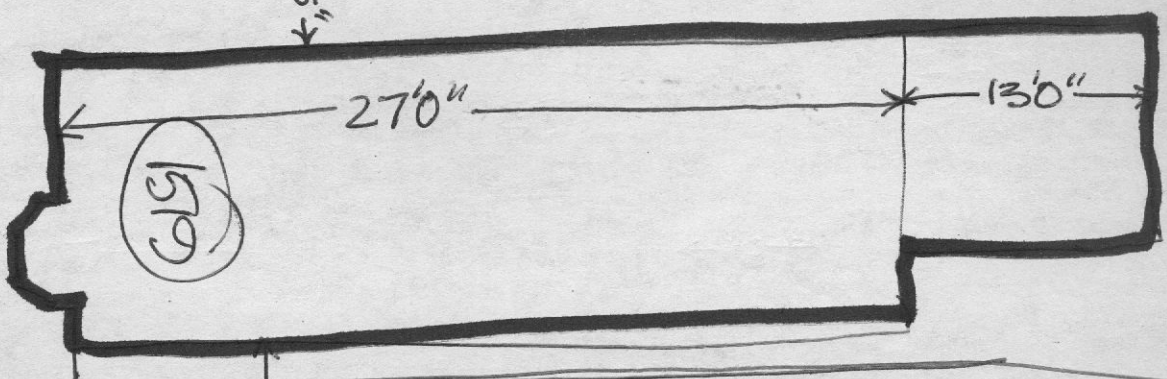
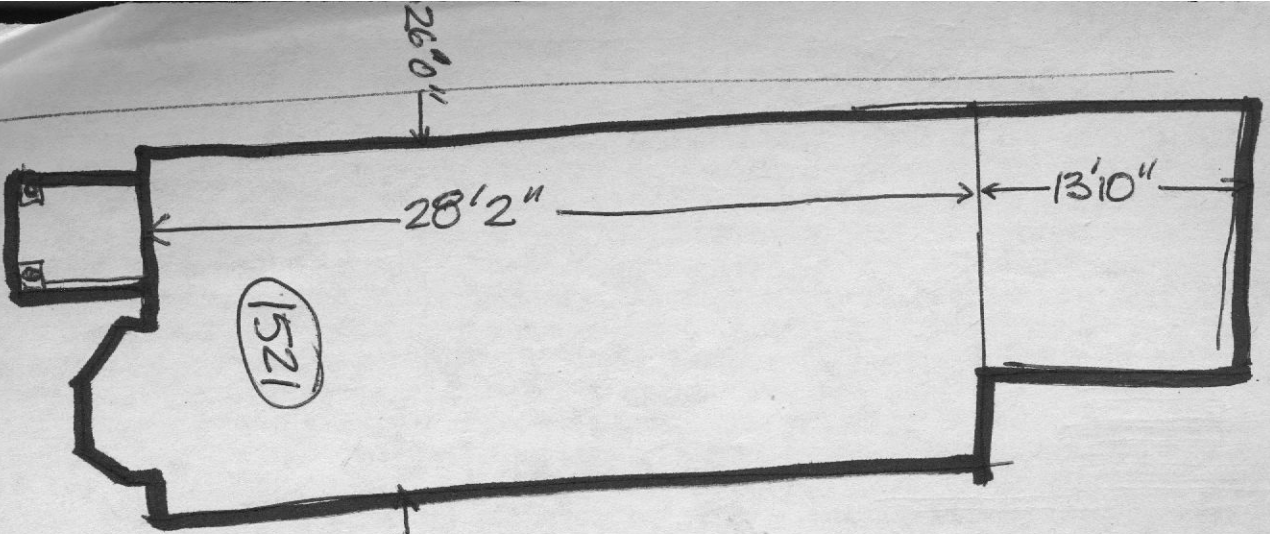
SIDEWALK approx 4"

1529 ANELIA ST.

(EACH BRICK 19" x 3")



1527 AMELIA ST. (clapboard width 5")



MASON ST. (ALLEY).

