

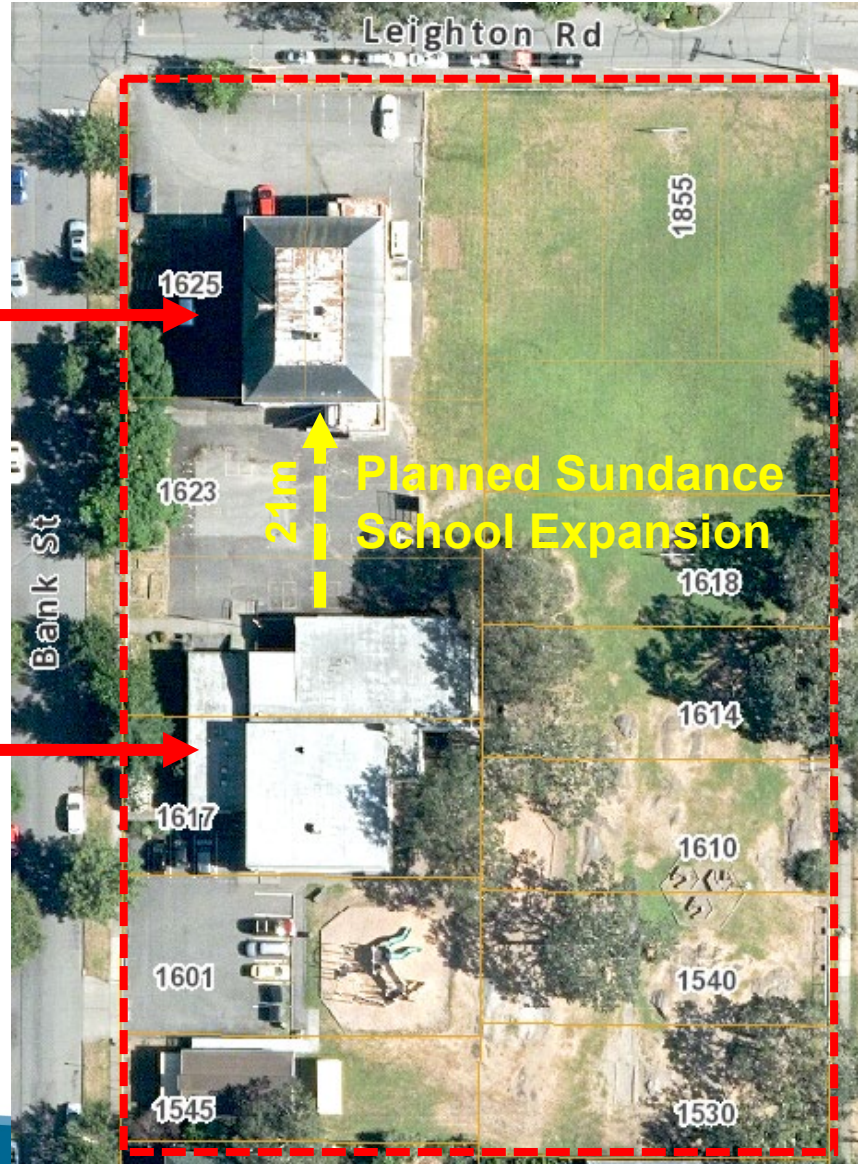
1623-1625 Bank Street- Advise to Council on Heritage Merit and Possible future Demolition



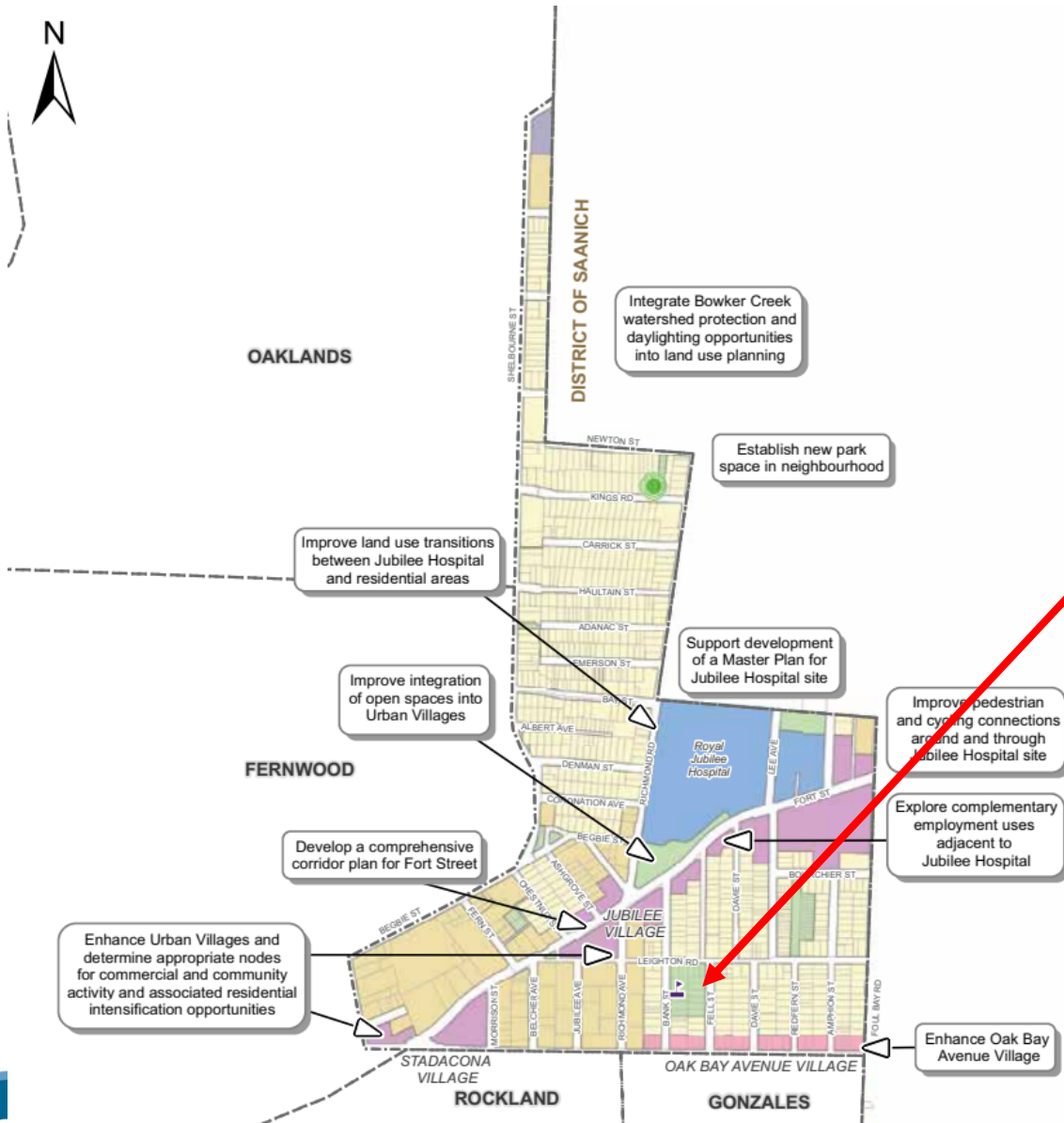
Aerial Map

**BANK
STREET
SCHOOL**

**SUNDANCE
ELEMENTARY
SCHOOL**



Official Community Plan



MAP 27

Jubilee Strategic Directions

Urban Place Designations*

- General Employment
- Town Centre
- Large Urban Village
- Small Urban Village
- Urban Residential
- Traditional Residential
- Public Facilities, Institutions, Parks and Open Space

Public Facilities

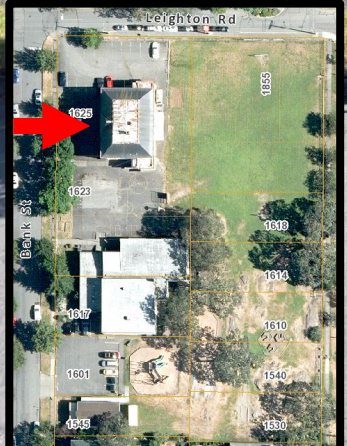
- Existing Public School
- Proposed Park (approximate location)

*Urban Place Designations are provided for information purposes only. Please refer to Map 2 and Figure 8 for designation information.



BANK STREET
SCHOOL

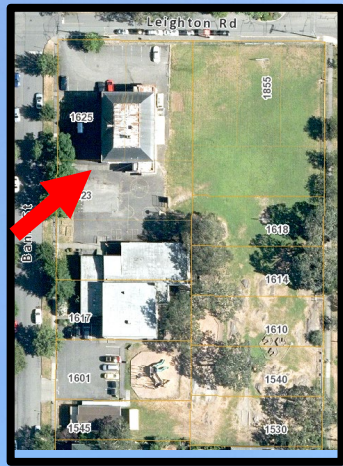
THE VICTORIA
COLLEGE of ART

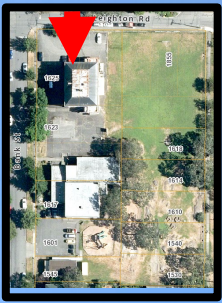




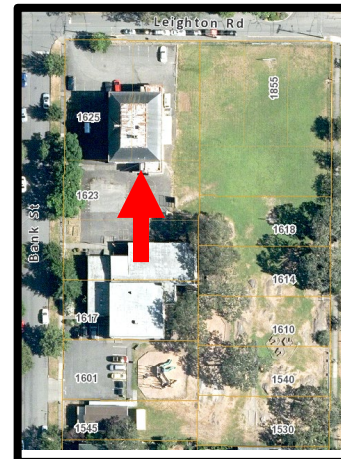
BANK STREET
SCHOOL

THE VICTORIA
COLLEGE of ART

















History & Significance

- Designed by architect D.C. Frame (architect of the Chinese Public School at 636 Fisgard Street)
- Built in 1912, with an enrollment of 193 students
- Considered an excellent example of a small masonry school in a nearly original state
- Features a chateau roofline, red brick walls and a battered concrete base
- A landmark in the South Jubilee neighbourhood



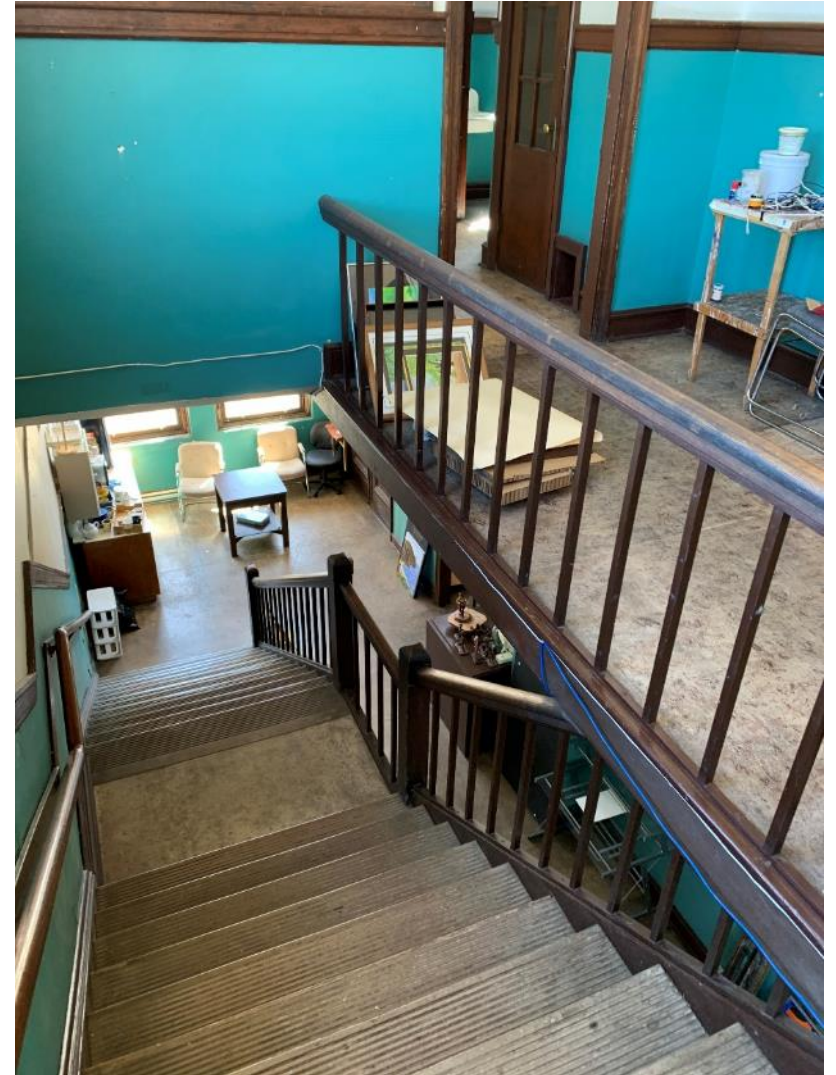
Building Condition

- Most interior walls contain asbestos and lead paint and would have to be removed
- Mechanical systems date back to 1912
- The building has no fire protection or fire alarms installed.
- The building has not been seismically upgraded and is at high risk during an earthquake
- Slate roof requires total replacement
- Windows are at the end of their service life
- Deteriorating brickwork, peeling paint rusting cornices, spider cracking visible on exterior
- Building is inaccessible



Spider crack in foundation

Building Condition



Second Storey Hallway

Building Condition



Building Condition



Building Condition



Main Entrance



Washrooms with Slate Dividers at Ground Level

Other Schools on the Heritage Register



George Jay Elementary School- 1118 Princess Avenue (1909 Wing)



Victoria High School- 1260 Grant Street (1911 wing)



Quadra School and Annex- 3031 Quadra Street (1914 wing and annex)



Burnside School- 3130 Jutland Road (1913 wing)



Oaklands School- 2827 Belmont Avenue (1913 wing)- Register Status



Margaret Jenkins School and Annex- 1824 Fairfield Road (1913 wing and annex)



Quadra Primary School- 2549 Quadra Street (1921)