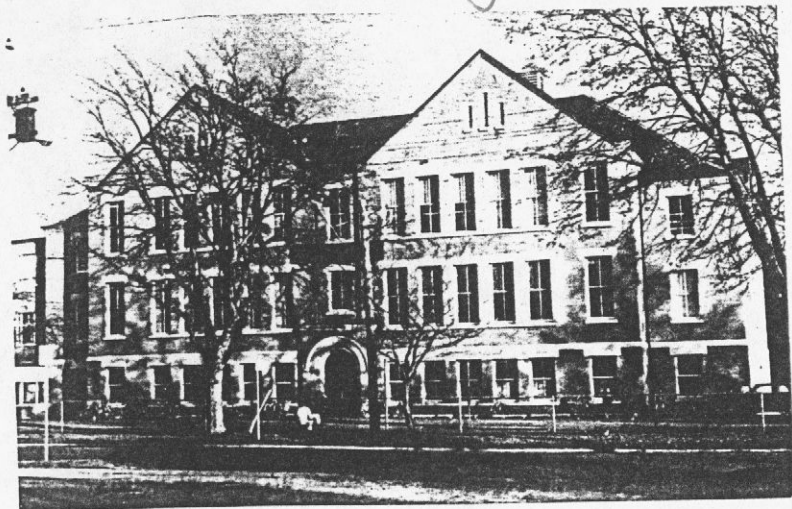


Early School Arch



BANK STREET SCHOOL
1625 Bank St., Victoria
1912

S.D. No.: 61008
Status: open

No. of rooms: six
Architect: D.C. Frame
Building materials: brick, concrete, wood, masonry
Style: Late Victorian Eclectic
Use or state: Victoria College of Art

Two-storey elevation with excavated basement and rectangular plan.

An excellent example of a small masonry school in a nearly original state, this structure demonstrates more architectural skill in planning than it does in the design of detail. It features separate entrances which lead to first-storey vestibules at the opposite ends of the building. The elevation is particularly fine, consisting of a foundation in smooth masonry with battered profile, and brick walls above. The building has a chateau roofline, and the slight, central projection is surmounted by a chisel-cut gable. The roof is capped with bold cresting which repeats the profile of the dentillation under the eaves. The detailing on the transoms is unusual.

SIR JAMES DOUGLAS SCHOOL
401 Moss St., Victoria
1910

S.D. No.: 61007 1
Status: open

Architect: J.C.M. Keith
Building materials: brick, stone, concrete
Use or state: school

Annexes: Thurlow 1913,
Fairfield, 1919
Addition: date unknown

Two-storey elevation with ground-level basement and H-shaped plan.

Heavy massing and sparse ornamentation characterize this structure by Keith. The plan is articulated by the configuration of the various roofs -- the main block is defined by its hipped-roof elements and two intersecting blocks terminate with a twin-gable effect. The entrance portico is minimal, consisting of a slightly recessed round-headed arch and moulding, surmounted by a flat pediment.

