

2391 Beach Drive

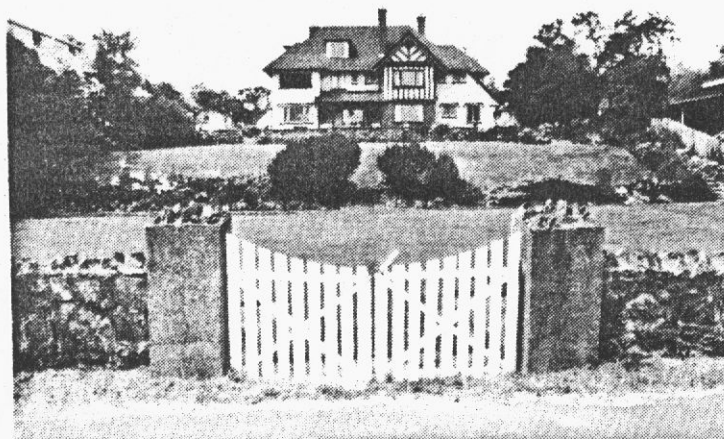
The R. D. Finlayson House

Built 1914

Architect: Samuel Maclure



This substantial property--the best fronting on Willows Beach--was built by Roderick D. Finlayson, son of Hon. Roderick Finlayson, former agent and chief factor of the Hudson's Bay Company. The son was born in 1867 at the family home in Rock Bay and was engaged for a number of years with Messrs. Turner Beeton and Co., a drygoods firm. On the death of his father in 1892, Mr. Finlayson retired to manage the family estate. In 1914, he had Samuel Maclure design this home in a tudor style. Mr. Finlayson died at home in 1916, having lived in the house less than two years. The porte cochere, four substantial chimneys and heavy roof elements all contribute to the picturesque massing of the house. The beautiful and well-kept grounds are extensive, covering four lots. The amount of property, which shows the house to its best advantage from both the Beach Drive and The Esplanade frontages, as well as contributing to an undefineable "Oak Bay" quality to the public areas of Willows Beach, could ultimately be the downfall of the house with spiralling property assessments. A separate two car garage matching the house in style --with chimney--faces Beach Drive.



Later owners through the 1930's and 1940's were the Pendray family whose former home is now the Captain's Palace Restaurant. The original bronze and art glass light fixture from the dining room of this house is held in the history collection of the B. C. Provincial Museum.