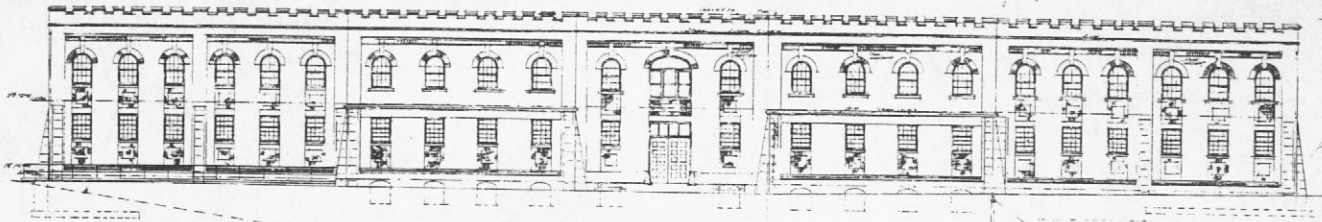


①



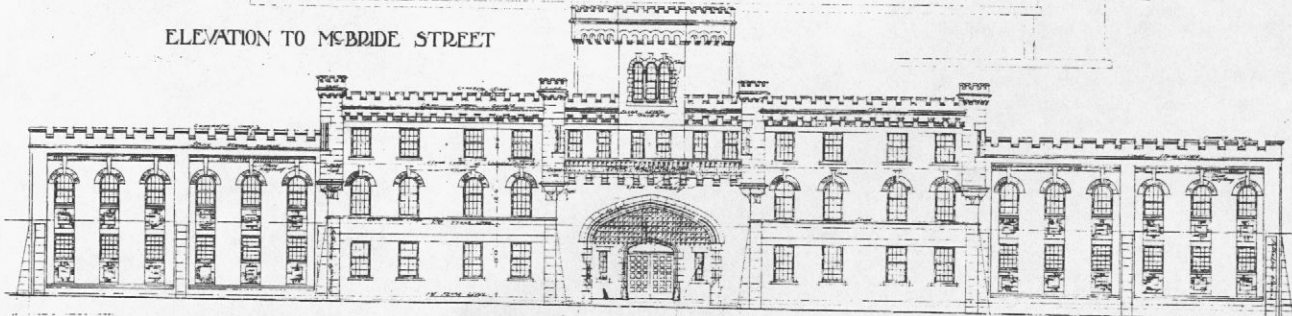
ELEVATION TO FIELD STREET

PROPOSED  
 DRILL HALL  
 VICTORIA B.C.

SCALE 8 FEET TO 1 INCH



ELEVATION TO MCBRIDE STREET



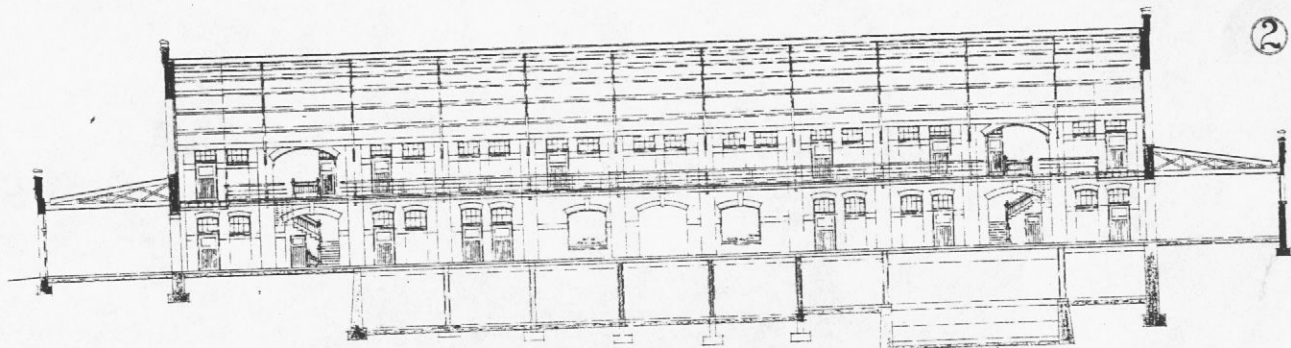
ELEVATION TO BAY STREET

713 BAY

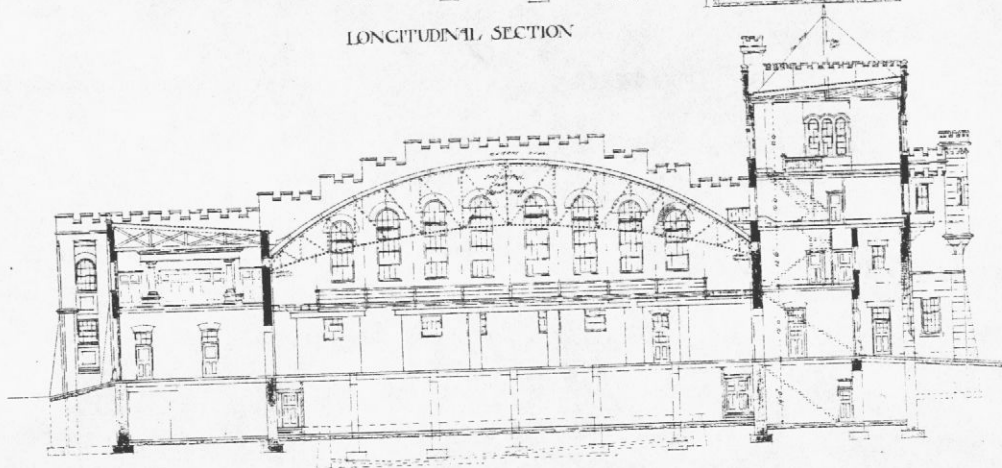
*W. 25/100  
 2/10/12  
 2/10/12*

PROPOSED  
DRILL HALL  
VICTORIA B.C.

2



LONGITUDINAL SECTION



CROSS SECTION  
SCALE 8 FEET TO 1 INCH

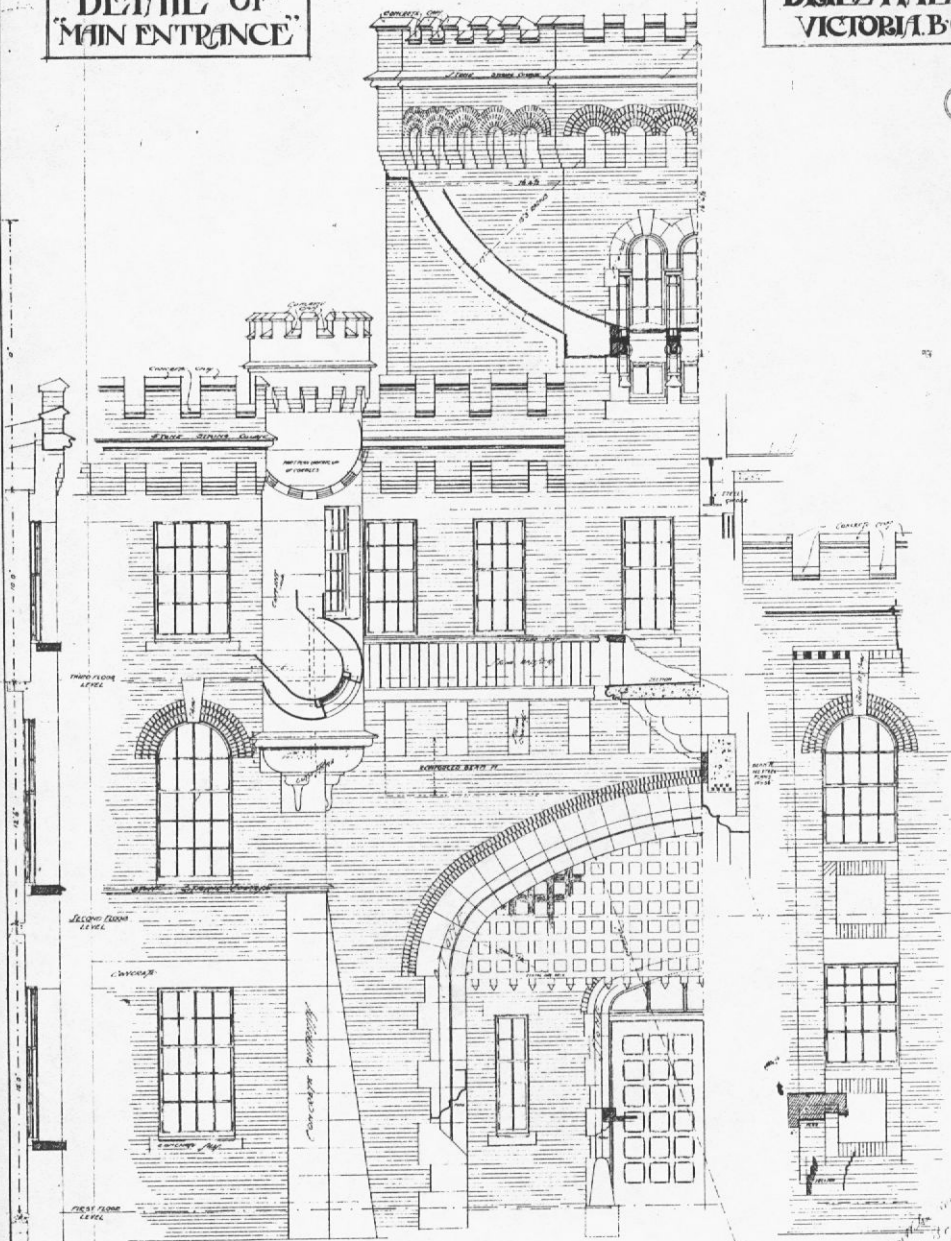
*20' 0" from the  
Victoria B.C.  
March 1882*

713 BAY

ONE INCH  
DETAIL OF  
"MAIN ENTRANCE"

PROPOSED  
"DRILL HALL"  
VICTORIA B.C.

3



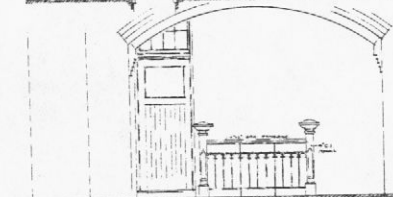
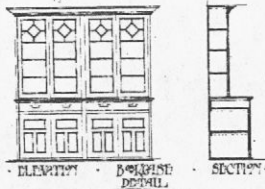
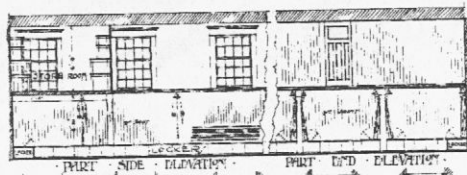
713 BAY

SCALE HALF INCH = FOOT

*in design of the building  
by J. L. ...  
July 1878*

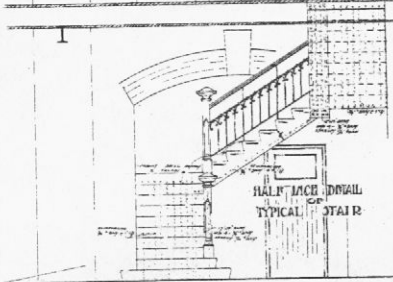
11

# PROPOSED DRILL HALL VICTORIA B.C.

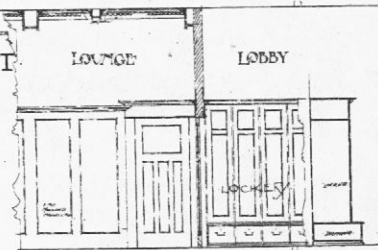


WALL FIN. DETAILS

DETAIL - ENTRANCE TO OFFICERS' MESS

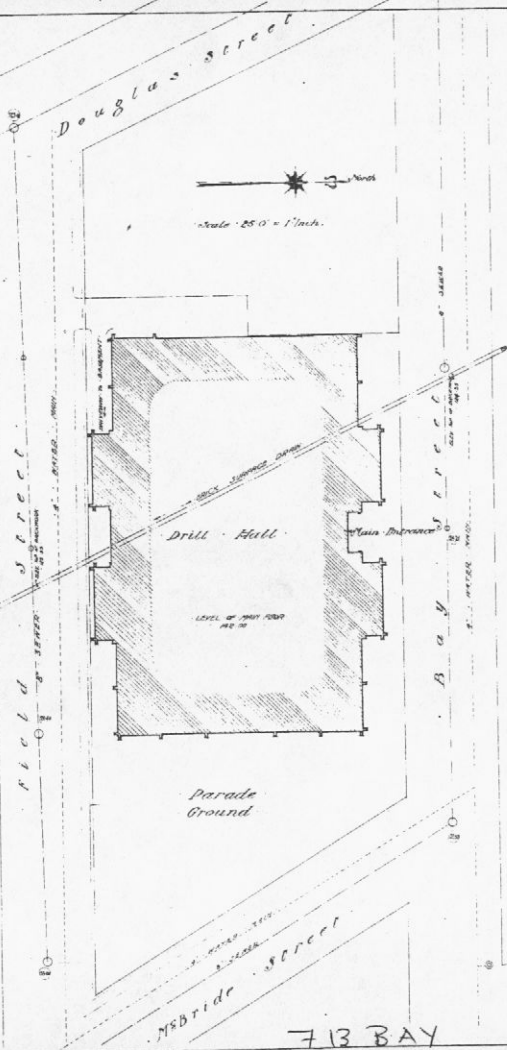


HALF ARCH DETAIL  
OF  
TYPICAL STAIR



PANELING ETC OFFICERS' MESS

*W.A. Jones & Son  
Victoria B.C.  
July 15<sup>th</sup> 1914.*



Scale - 25.0 = 1 inch.

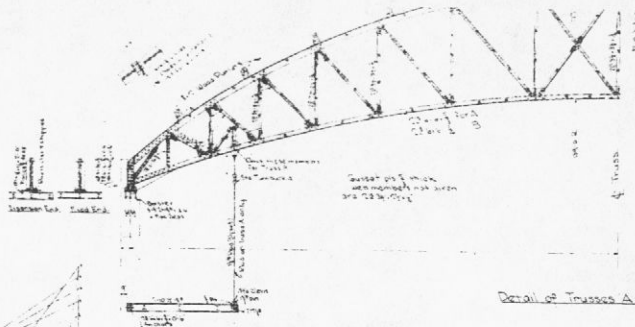
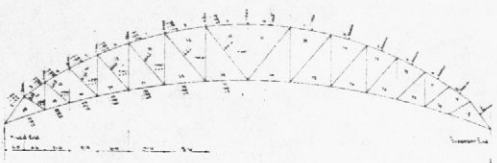
Drill Hall

LEVEL OF 1911 ROAD  
44.20

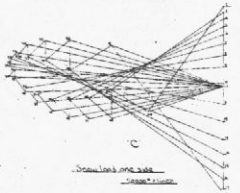
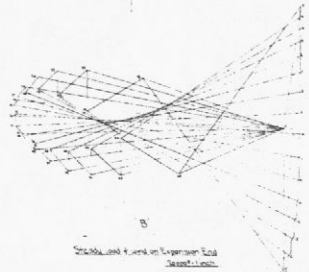
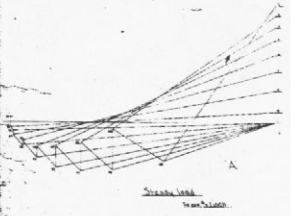
Parade Ground

713 BAY

**PROPOSED  
DRILL HILL  
VICTORIA, B.C.**



Dimensions are given  
in this plan



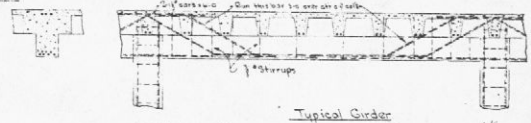
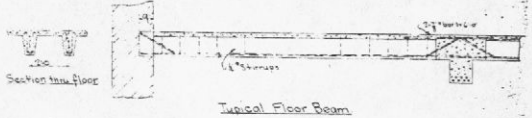
**Column Spangula**

Best Columns		1st Storey Columns		2nd Storey Columns	
Col. No.	Col. Section	Col. No.	Col. Section	Col. No.	Col. Section
1	12" x 12"	1	12" x 12"	1	12" x 12"
2	12" x 12"	2	12" x 12"	2	12" x 12"
3	12" x 12"	3	12" x 12"	3	12" x 12"
4	12" x 12"	4	12" x 12"	4	12" x 12"
5	12" x 12"	5	12" x 12"	5	12" x 12"
6	12" x 12"	6	12" x 12"	6	12" x 12"
7	12" x 12"	7	12" x 12"	7	12" x 12"
8	12" x 12"	8	12" x 12"	8	12" x 12"
9	12" x 12"	9	12" x 12"	9	12" x 12"
10	12" x 12"	10	12" x 12"	10	12" x 12"



**Beam Table**

Beam No.	Beam Section	Span	Supports
1	12" x 12"	10.0	2
2	12" x 12"	10.0	2
3	12" x 12"	10.0	2
4	12" x 12"	10.0	2
5	12" x 12"	10.0	2
6	12" x 12"	10.0	2
7	12" x 12"	10.0	2
8	12" x 12"	10.0	2
9	12" x 12"	10.0	2
10	12" x 12"	10.0	2



713 BAY