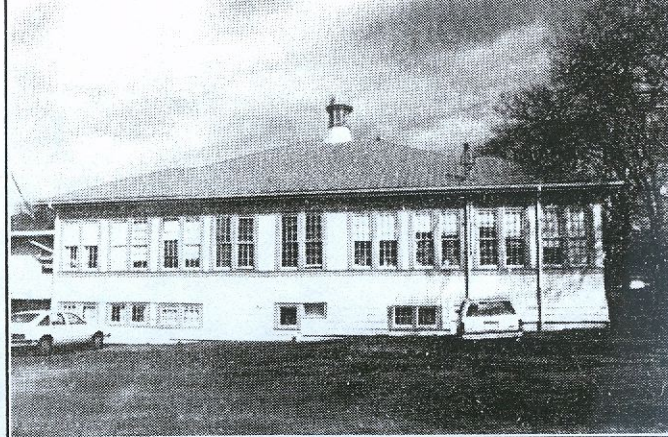


The Corporation of the District of Saanich

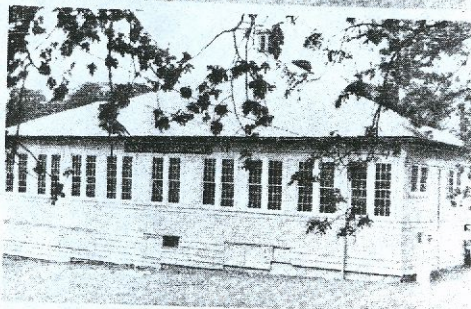
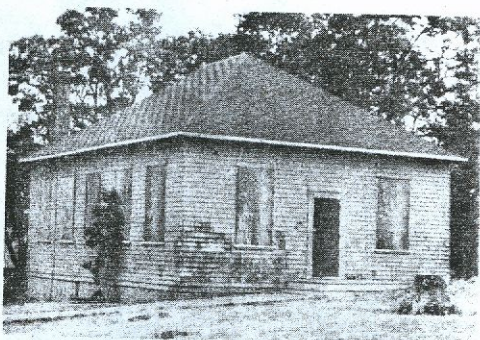
This was the new Cedar Hill School, built in 1912 to replace the original two-room 1872 building (see 3851 Cedar Hill Cross Road). It was designed by Harold J. Rous Cullin and built by James Smethurst, whose bid of \$5226 won him the contract. It originally had six classrooms and a full basement. In 1957 a staff room, offices and washrooms were added. Cedar Hill School was phased out by 1971, when all students were transferred to Braefoot School. The building was known as Sentinel Elementary School for a brief period, but that school closed in 1976. It is now used by the Capital Regional Association for the Mentally Handicapped.

This building was designed in the institutional hipped-roof bungalow style then commonly used for schools. The roof is stepped, and a cupola in the middle of the top ridge serves as a vent. The multi-paned double-hung sash windows in a band under the eaves have wide string courses above and below. The colour scheme was originally reversed, with dark-stained shingle siding and light-coloured trim.

Bottom: 3861 Cedar Hill Cross Road. Cedar Hill School and students. ca. 1920.



Savich OF Y

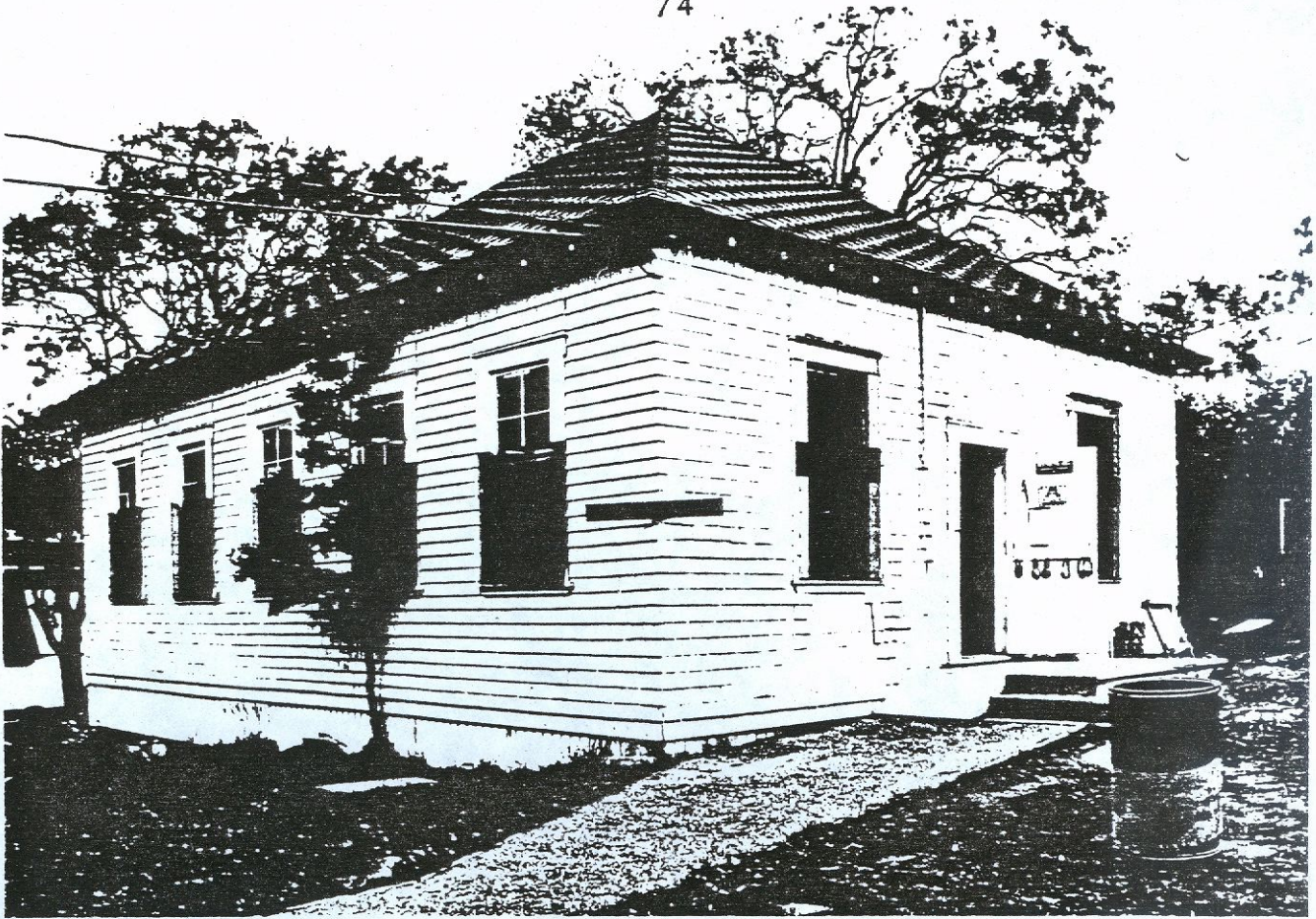


3861 Cedar Hill X Road

The first school in the district was held in Mrs. Henry King's kitchen at the church farm of St. Luke's in 1861. In 1862 St. Luke's was built and classes were held in the church until the old school house was built in 1863 on land donated by William F. Tolmie. The shingled school house in current use was built in 1905.

Cedar Hill School- Cedar Hill Cross Road

The first school in the district was held in Mrs. Henry King's kitchen at the church farm of St. Luke's in 1861. In 1862 St. Luke's was built and classes were held in the church until the old school house was built in 1863 on land donated by Simon Tolmie. The shingled school house in current use was built in 1905.



3861 Cedar Hill Cross Road

Cedar Hill Elementary School
"Braefoot Annex"

Built 1890-1900

In 1863, a two-room school, was built by St. Luke's Church but was also used by the church for services. The land was donated by William Fraser Tolmie.

The "Braefoot Annex" was built between 1890 and 1900 as a Manual Training Centre for the school.

In 1905 the shingled schoolhouse, still located on the same property was built in the vernacular style, resembling a bungalow.

The original school was demolished in 1922.

Laanick - Reg. of Res. Bldgs. of de-Mt - 14 Oct 73